

Pen Tablet

User Manual

Windows 2000 / XP / Vista

General Information

1. Overview

Welcome to the world of tablet and digital pen! You are able to discover how easy to control your personal computer by using a wireless digital pen instead of a mouse.

2. Pen Tablet Features:

1. Mouse pointing: Pen Graphic Tablet pen positions the cursor on your screen. You can position your cursor anywhere you want just move your Pen hover on the tablet board surface.
2. Three-buttons mouse commands: The wireless digital pen provides all functions of a three- buttons' mouse by using its pen tip and two buttons, corresponding as normal mouse three-buttons.
3. Short Cuts: It will fast up cursor pointing to select program to run. And you are able to customize the short cut (so called Hot Cells). Set a key to launch a commonly use application or file. Such as email program.
4. Pen Pressure Sensitive: Pen Graphic Tablet all come with a very high sensitive Pen pressure. The function of the digital pen is able to draw a line very thin, thick, light or dark (the pressure sensitivity). You also can write, sign, annotate documents, and draw, sketch or paint as easily as you would on normal paper and simulate the functions like pencil, mark pen, brush, or watercolor pen by using the commercial software packages such as Adobe® PhotoShop™, Corel® Painter™, Corel® Paint Shop™ and PhotoImpact.

3. System Requirements

- 1.CPU: 1GHz 32-bit (x86) / 64-bit (x64) or above.
- 2.Memory: 1GB or above.
- 3.Hard Drive: 40GB or above (remaining at least 15GB free space)
- 4.CD-ROM: DVD ROM



Hardware requirement issued by Microsoft Vista.

4. Installing the Driver Software on Windows


For Windows 2000, XP or Vista, please follows installation procedure as below:

- 1.Insert the Driver CD into the CD-ROM drive, and wait for main menu appear on the screen.
- 2.If the setup program does not be started automatically, please start the setup programs manually by selecting [My Computer] → [CD/DVD Rom] → Open the Drive → Access [Setup] to start the installation.
- 3.Select the Driver Setup and press the Enter key, follow the instruction to install the driver completely. Restart the PC after the driver has be installed successfully.

5. Hardware Installation



Connecting a tablet with USB interface into the PC after finished the driver installation and restarted the Windows system:

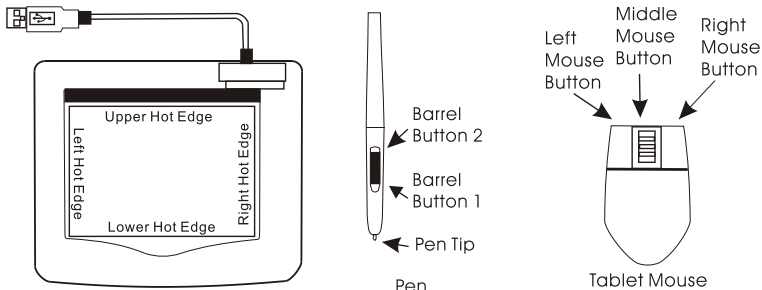
To connect a pen tablet with PC, you will see a small tablet icon () appears in the system tray, which is normally at the lower right corner of the screen.



Please install driver first before plug pen tablet into your PC.

6. Verifying Hardware and Driver Functions

Follow these steps to ensure that your pen tablet has been installed properly:





【NOTE】

1. Pen Tablet wireless mouse is an option for your purchase.
2. Pen Tablet wireless mouse only works on the top of pen tablet board.

The green LED light on the tablet is the main indicator for hardware operation and depending on your pen tablet model may be located at a different place that shown in the above diagram. This LED normally stays off, and will only turn it on or off in response to various conditions. Watch the state of the LED on the tablet as you go through these test steps:

1. Tap on any surface with the tip of the pen, or press the left button of the mouse, to "wake it up" if it has gone into standby mode. A built-in power saving function may have forced the pen or mouse into the standby mode if either of them is not used for a period of time.
2. As soon as the pen tablet itself active, the LED will be light briefly, and will then go and stay off again.

3. When the tablet detects the presence of the digital pen or mouse, the LED will be blinked slowly. This happens either when pen tip is hovering or placing within the working area which above the tablet.
4. When you press a button on the pen barrel, or click on a mouse button, the LED will be lighted up.
5. Hovering and moving the pen or the mouse in the working area will cause the cursor on the screen to move accordingly.

 **Note:** After the tablet's device driver has been properly installed, a small tablet icon () will appear in the system tray, which is normally at the lower right corner of the screen.

7. Usage Tips

7.1 Wake up the digital mouse from the standby mode

If the digital mouse does not react after you do not use it for a while, press the left button to "wake" it up from the standby mode.

7.2 Tapping before you use the digital pen

Before you use the digital pen, or after not using it for several minutes, tap the pen on any surface of the tablet to "wake" it up from the standby mode.

7.3 Double tapping

When you double tap with the digital pen (equivalent to a double click with a mouse), try to keep the pen tip away from the tablet's surface, or at least try to lift the pen tip as fast as possible before the second tap.

7.4 Storing the digital pen


To store the pen, make sure the pen tip does not touch anything, and especially do not let the pen stand in a cup or penholder with the tip down. Even though the possibility is low, press the pen tip will still cause a constant drain on the pen's battery. Place the pen in a penholder, or turn the pen tip pointing upward or horizontally with the pen tip free of any pressure by other objects.

7.5 Scrolling function of digital pen

The digital pen has the same function of the normal mouse for scrolling pages. Please press the first button of the digital pen (same function as mouse's middle click) over the tablet's working area.

7.6 Using a pen without an ordinary mouse

You may install the digital pen, digital mouse, and normal mouse in your computer at the same time and you can also remove them to different computer as well. However, only one device is able to work in the meantime.

 **Please do not use more than two devices at the same time in case the screen cursor is jittering or not moving.**

Battery Change

Pen Tablet Pen:

Pen Barrel Button is same as the mouse button.

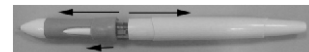
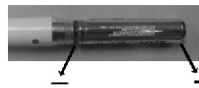
- ① Pen Tip: Default setting as the mouse left button
- ② Barrel Button 2: Default setting as the mouse right button
- ③ Barrel Button 1: Default setting as the mouse scroll button



Battery change

- 1) push & pull on pen cap

Remove pen cap from left to right, and replace a new battery please notice the anode and the negative pole direction.



Different Pen Tablet model come with its own pen model.

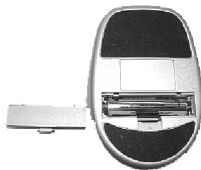
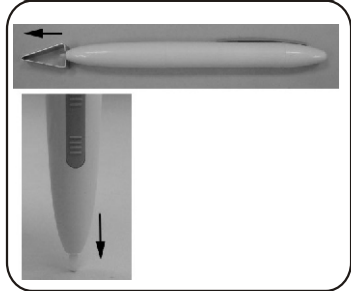
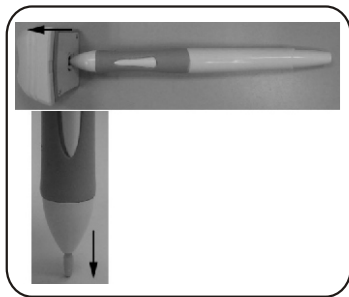
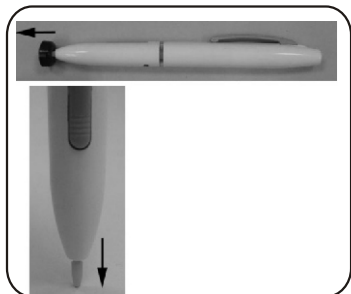
- 2) screw pen cap


Hold on to both end and screw in opposite direction (see screw cap image.) and pull pen cap, and replace a new battery. Please notice the anode and negative pole direction.





Pen Tablet Mouse:

To replace Pen Tablet wireless mouse battery, please simply remove the bottom cover from mouse and replace a new battery.

**Pen Tip chage**

 Please gently pull pen tip straight out and replace a new pen tip.


Pen tablet configuration

You may configure the pen tablet by modifying the functions of pen tip and the two barrel buttons, tap [Start] > [Settings] > [Control Panel], and double-tap the [Tablet Setting ] icon, or tap on the tablet icon () in the system tray, usually located at the lower right corner of the screen. You may also adjust the pressure sensitivity of the digital pen by determining the scope of the tablet's working area, or (re-) program the hot-cells of your pen tablet by modifying device driver.

1. The Info Tab - The Info tab displays the version number of the driver and Tablet PC function.



(1) Show Icon in System Tray

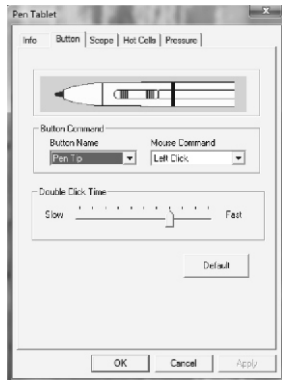
You can choose if you want to show the tablet icon () in the system tray.

(2) Support Tablet PC Feature

You can select the Tablet PC function of pressure sensitive by tick the box of Support Tablet PC Feature. (Under Windows Vista only)

- After the Tablet driver is installed in the Windows Vista, the Tablet PC function setting will be enabled that lead to the barrel buttons are not working on Windows Desktop (only the Pen Tip is working).
- If the Tablet PC setting is disabled, the most of art software's pen pressure (Photoshop, Illustrator, Corel Painter) are still working, but the pen pressure will be disappeared in MS Journal, OneNote, etc.

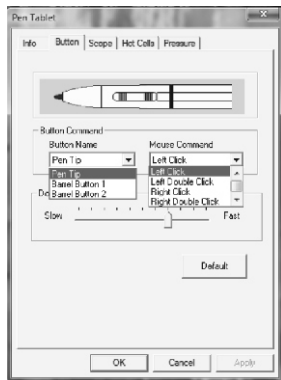
2. The Button Tab



2.1 Button Command

2.1.1 Button Name

You may re-program the functions of the pen tip and the two-barrel buttons by selecting the button name from the drop down menu and assign a command of a traditional three-button mouse to it. According to the mouse function, you can select no action, left click, left double click, middle click, middle double click, right click, or right double click.



2.2 Double Click Time

Move the Speed Slider toward "**Slow**" if you want more time in double tapping with Pen Tip or opposite if move the Speed Slider toward "**Fast**". This setting is the same as Double-click Speed on the page displayed by selecting **Start** → **Control Panel** → **Mouse** → **Buttons**. Changing the speed in one place or changing the other in the meanwhile.

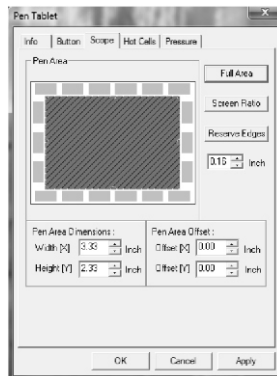
2.3 Default

Tap on the **Default** button to recovery from all the manufacture settings.

3. The Scope Tab

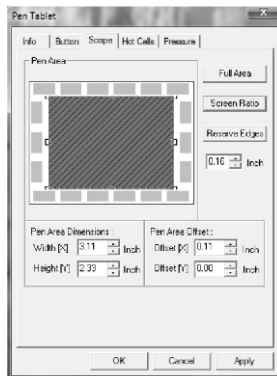
3.1 Full Area

Tap on the Full Area button to select the largest possible working area.



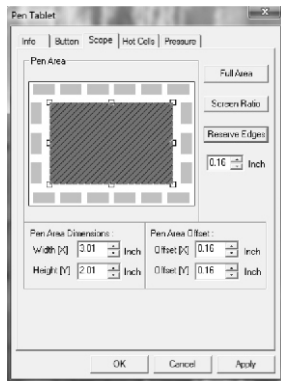
3.2 Screen Ratio

Set the tablet working area same as the screen size by clicking the button of screen ratio.



3.3 Reserve Edges

Tap on the Reserve Edges button to allocate space for the tablet's hot cells.



3.4 Pen Area Dimensions

Indicates the current height and width in the Pen Area Dimensions. You may also type in new values here to change the dimensions of the tablet working area.

3.5 Pen Area Offset

Indicates the horizontal and vertical distances of the upper left corner of Pen Area from the upper left corner of the maximum Pen Area. You may also set their values by typing in the numerical values here.

4. Hot Cells define page

4.1 Hot Pad Layout

In Hot Pad Layout area, you can select any hot key to see the property by clicking the hot key in the blue map that shows on the digital tablet's location.

4.2 Hot Edges

There are four lines around the tablet for setup of your hot key location.

4.3 Print

Tap on the Print button to print an overview of all hot cell functions.

4.4 Clear

Tapping on this button will clear up the definition of the selected Hot Cell, so there is no action will be taken when the Hot Cell is tapped later on.

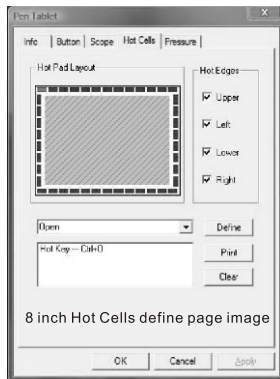
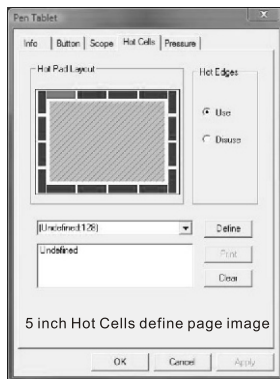
4.5 Define

Press the Define key to set the programs locations, Internet or hot key location.

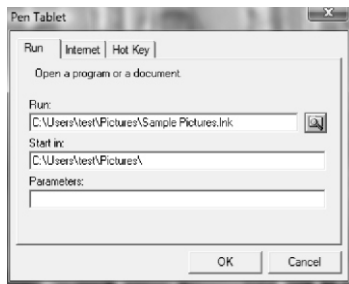
4.5.1 Define Hot Cell - Run

Run - You may use the browse button to select a file and run, or you may type in a file name with complete path.

Start in - This is the initial folder when the program starts the execution.



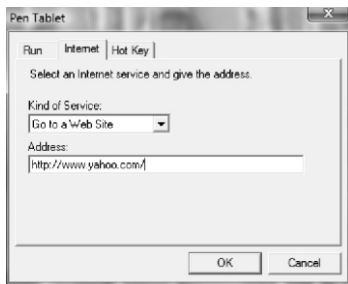
Parameters - The string type will be passed to the program as parameters. For example, you may type in a document name here and pass it to a word processing program specified in the Run line above.



4.5.2 Define Hot Cell - Internet

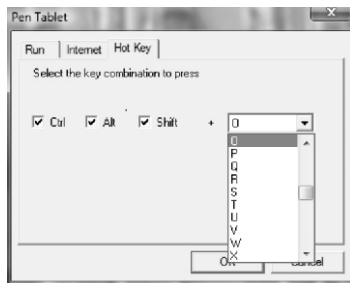
Kind of Service You can select some Internet service to start. For example, browsing website, newsgroup, send an E-mail, or using other Internet services. The exact program initiated (for example, the browser program) depends on system settings.

Address - The URL address for the selected service. For example, the Website or e-mail addresses.



4.5.3 Define Hot Cell - Hot Key

Select the key combination to press. You may select any key such as alphanumeric key or cursor control key, combined with Shift, Ctrl and / or ALT key.



5. The Pressure Tab

5.1 Pressure Test

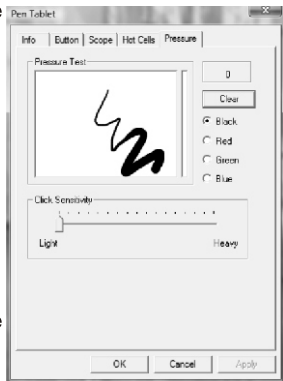
There are four different colors for selecting and the pressure sensitivity of the pen tablet can be adjusted in this tab. There is a test area to see the thickness of a line by pressing a certain pressure of pen tip on the tablet pad. The numerical value of the pressure level is shown in the field above the **Clear Button**.

5.2 Clear

Tap on the Clear button to clean the space up in the Pressure Test area.

5.3 Click Sensitivity

By default setting, tapping with the pen tip is equivalent to a left click of a mouse. Move the slider in the sensitivity bar to adjust the response of the pen tip. Light means when presses the pen tip that will be reacted very quickly with a slight power, but the heavy function is opposite.



Pen tablet Application

Pen experience application available in Window Vista™
Ultimate Version and Office 007

Start Menu → Accessory
→ Window Journal
→ Stick Notes

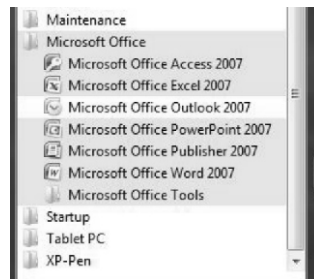


☛ 【NOTE】

1. Windows Vista and Office 2007 Journal and Stick note function depends on the Windows version. For more detail please check <http://www.microsoft.com>.
2. Journal and Stick note need to collocate with Pen Tablet hardware and Pen Tablet driver

Microsoft® Office

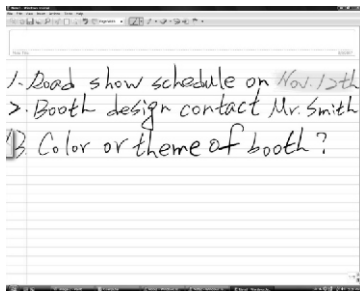
- (A) Microsoft® Office Excel 2007
- (B) Microsoft® Office Word 2007
- (C) Microsoft® PowerPoint 2007
- (D) Microsoft® Office Outlook 2007
- (E) Microsoft® Office OneNote 2007



1. Windows Journal:

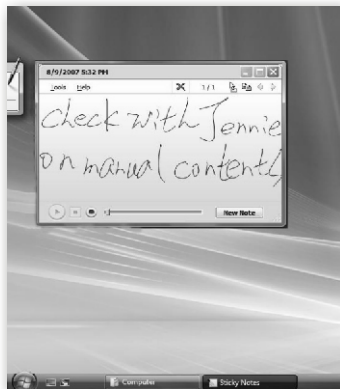
Microsoft® Journal is an application included in Vista. that is exclusively for the benefit of users working with a pen tablet, pen display, or Tablet PC. Journal simulates a physical notebook, but with all the advantages of digital Note Taking.

You can use it to capture handwritten notes and drawings, convert handwritten notes to text, import graphics files, and share notes with others You can use a pen in Journal to jot notes and capture quick sketches providing valuable collaboration options for use at home, school, and work. Journal also incorporates a powerful search engine that can even locate handwritten content.



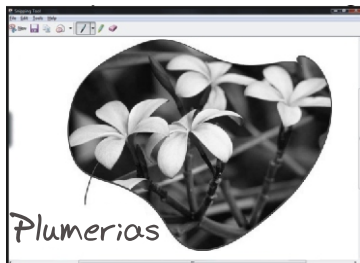
2. Stick Notes

You can use the Sticky Notes accessory to write and store short notes, phone numbers, and other reminders. You can place sticky notes directly on your desktop as quick reminders or in any OLE-enabled program, such as Word, to add electronic comments or reminders to your documents.



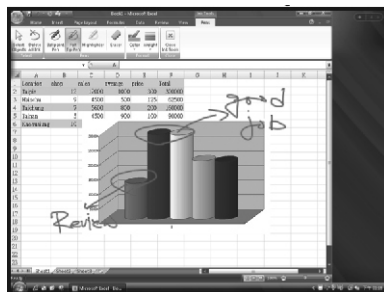
3. Snipping Tool

Use your tablet pen to select a portion of a website, document, or other content on your screen. You can add handwritten comments and then paste it into an e-mail message or other program.



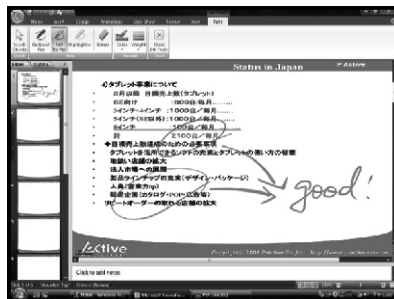
(B)Microsoft Excel 2007

Path: Review → Start Inking

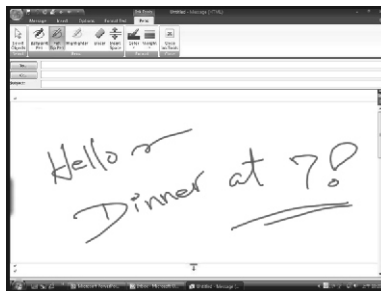
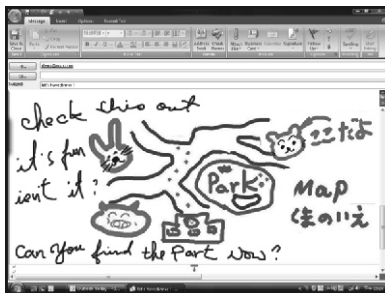


(C) Microsoft® Power Point 2007

Path: Review → Start Inking



(D) Microsoft® Outlook 2007 Path: Message → Start Inking



(E) Microsoft® One Note 2007



Microsoft, Windows are either registered trademarks or trademarks of Microsoft Corporation in the United States and/or other countries. Any additional company and product names mentioned in this documentation may be trademarked and/or registered as trademarks. Mention of third-party products is for informational purposes only and constitutes neither an endorsement nor a recommendation. Our assumes no responsibility with regard to the performance or use of these products.

Status and Error Message of Pen Tablet LED Indication**A. Pen Tablet LED status indication :**

Status	Indication
LED Flashing	The plug and play hardware recognizing when the pen tablet connected to PCs USB port.
LED extinguishing	1.Max pen tablet induction reading height with pen is over limit (10mm). 2.Sleeping mode is activated. Tap the Stylus pen on tablet to wake it up. 3.Battery is out of power, please replace the battery.
Lit LED extinguishing	When Stylus pen is touching the tablet.

B. Pen Tablet Error Message :

Error Message	Solution
No tablet icon displayed on the System tray when the tablet connected to PC.	1.Did Pen tablet driver install? 2.Make sure System tray is active. 3.Did you install any tablet driver before? Please remove all previous pen drivers and reboot system, then install Pen Tablet driver. 4.Connect to other USB port to ensure the Tablet is connected correctly. DO NOT connect Pen Tablet through USB HUB or USB port in front of the PC. 5.Connect to other PC

Error Message	Solution
Pen Tablet can not use even the tablet icon displayed on System Tray.	<ol style="list-style-type: none">1.Please check the LED status indication, or try connecting to other USB port.2.Replace Pen battery.3.Connect to other PC.
Cursor is following the movement of Stylus pen but cursor will shacking, right button auto clicking or trailing....	<ol style="list-style-type: none">1.Pen Tablet and Pen over maximum induction reading height (10mm) will cause cursor shacking, right button auto clicking and trailing.2.Replace pen battery3.Connect to other PC.

Memo.....